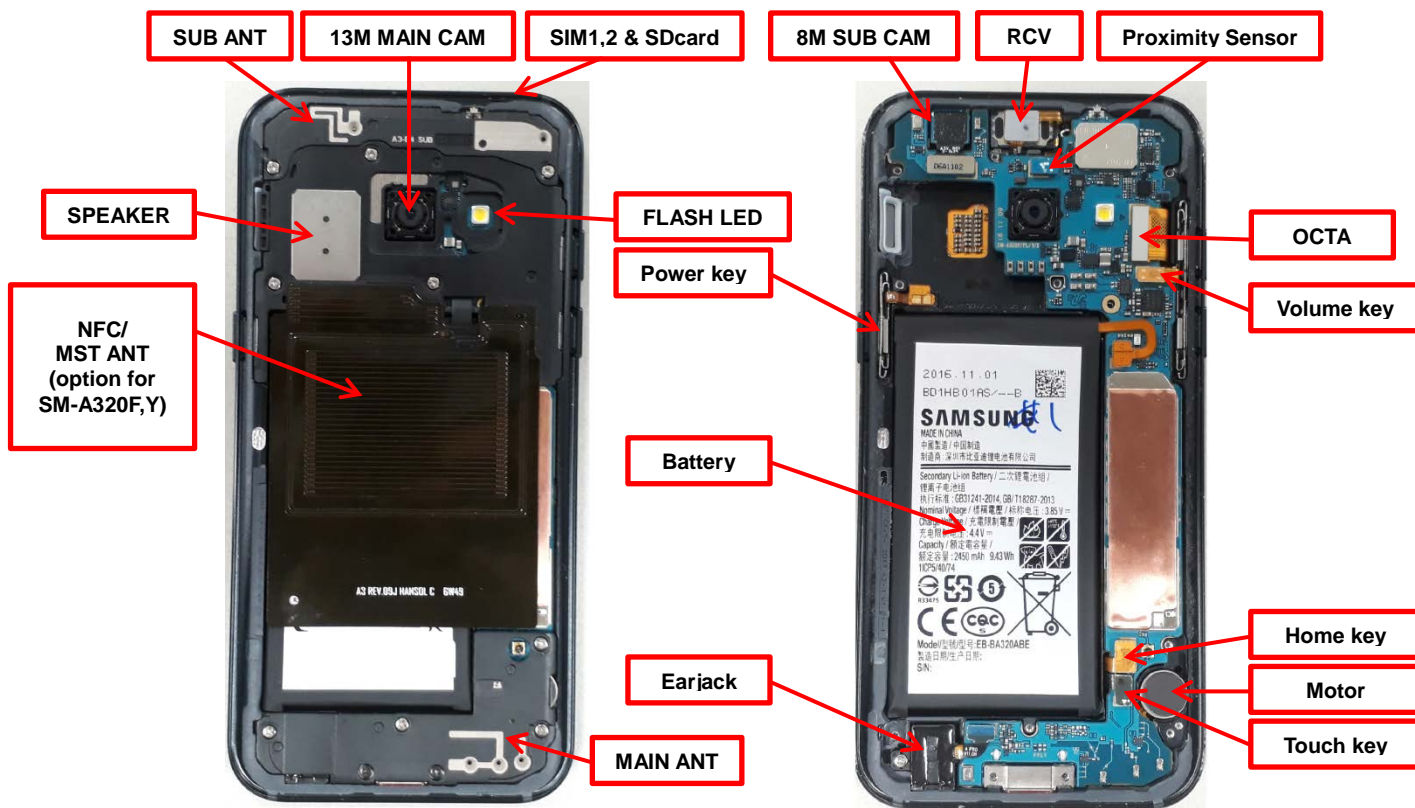


## 7. Level 2 Repair

### 7-1. Components on the Rear Case



## 7. Level 2 Repair

### 7-2. Pre-requisite



	
<b>Tweezers / Disass'y Stick / Screw Driver</b>	<b>Anti-static Gloves</b>
	
<b>Anti-static Mat</b>	<b>Hot Plate</b>
	
<b>A OCTA Disassembly Holder</b>	<b>OCTA Disassembly Upper</b>
	
<b>Ethyl Alcohol</b>	<b>Cotton Swab</b>

---

## 7. Level 2 Repair

---

### 7-3. Parts which must be changed after repair

BOM A code	Image	Remarks
A/S Back Glass Outside Tape (Common) <a href="#">[GH81-14257A]</a>		Replace for Back Glass repair
A/S Back Glass Inner Tape <a href="#">[GH81-14258A]</a>		

## 7. Level 2 Repair

### 7-4. Disassembly

1

- 1) SOC 68% ↓ : Put the device in the chamber for 10~20 minutes under 70℃.
- 2) SOC 68% ↑: Put the device in the chamber for 10~20 minutes under 60℃.
- 3) Detach the Back Glass.



2

- 1) Unscrew 9 Point
- 2) disassemble SIM Tray from device



※ Caution

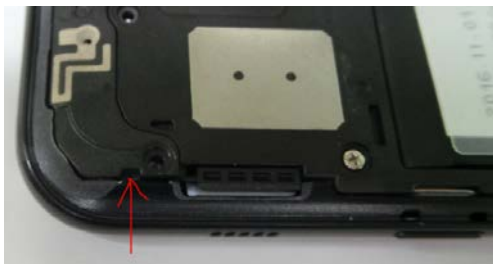
- 1) Be care of scratch

※ Caution

- 1) Be care of scratch

3

- Disassemble Upper Rear.  
(Use disassemble hole left side of Rear to detach it)



※ Caution

- 1) Be care of Rear damage

4

- And then Disassemble mid-Rear on the downward.



※ Caution

- 1) Be care of Rear and connector damage

## 7. Level 2 Repair

5

Finally Disassemble Rear of bottom side.  
(Use disassemble hole left side of Rear to detach it)



6

1) Unscrew 3 Points.



※ Caution

1) Be care of Rear and connector damage

※ Caution

1) Be care of PBA damage

7

Detach All connectors. (7 Point)  
- Sensor / Battery / OCTA / Power key / Home key / Touch key / Earjack



8

1) Detach Main PBA from Front



※ Caution

1) Be care of connector/cable damage

※ Caution

1) Be care of PBA damage

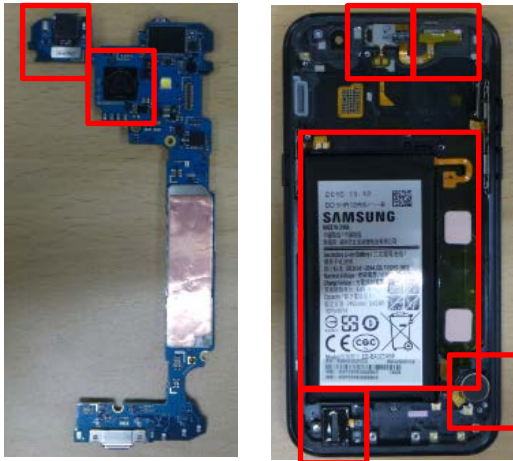
Confidential and proprietary-the contents in this service guide subject to change without prior notice

Distribution, transmission, or infringement of any content or data from this document without Samsung's written authorization is strictly prohibited.

## 7. Level 2 Repair

9

1) Detach other components.



※ Caution

1) Be care of several kinds of damage



## 7. Level 2 Repair

### 7-5. Aassembly

1

Attach and then Press Home key on Front.



※ Caution

- 1) Be care of Homekey FPCB connector
- 2) Be care of press power/time

2

Attach Battery on Front.



※ Caution

- 1) Be care of tilt

3

Attach OCTA on Front.

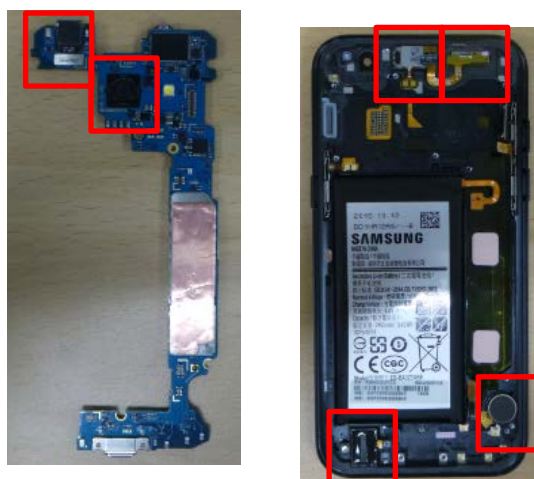


※ Caution

- 1) Be care of FPCB and OCTA damage

4

Attach components on Front.  
(RCV module, Motor) and then Press RCV.



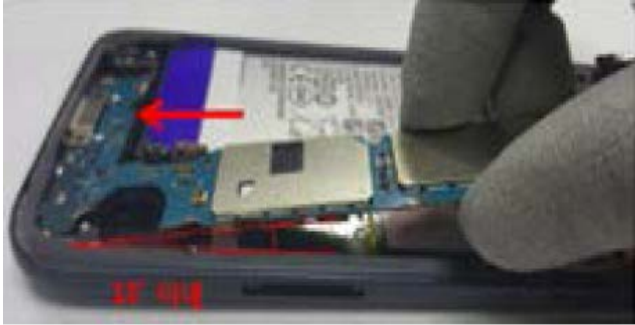
※ Caution

- 1) Be care of FPCB damage and tilt
- 2) Be care of press power/time

## 7. Level 2 Repair

5

1) Attach PBA assy in Front Assy (PBA+Front)



6

Attach All connectors. (7 Point)  
- Sensor / Battery / OCTA / Power key /Home key / Touch key /Earjack



※ Caution

1) Be care of chip damage nearby screw point

※ Caution

1) Be care of Battery damage

7

1) Screw 3 Points.



8

Assemble the REAR in sequence Lower → middle → Upper Rear.



※ Caution

1) Be care not to damage the PBA

※ Caution

1) Be care of scratch and REAR damage



7. Level 2 Repair

9 Screw 9 Point and then insert SIM Tray on device.



10 Attach Back Glass.



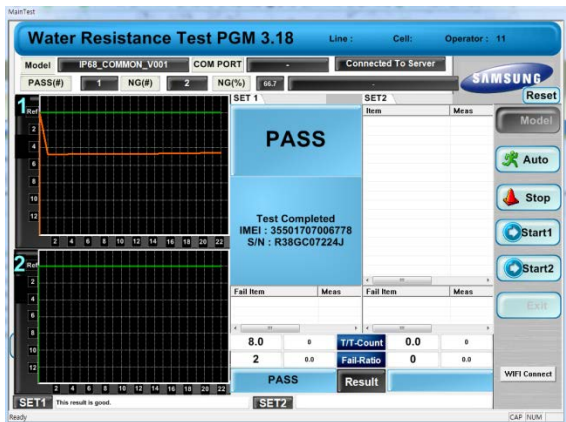
※ Caution  
1) Be care of scratch and REAR damage

※ Caution  
1) Be care of scratch and tilt.

11 Press Back Glass.



12 Do water resistance test(WRT)



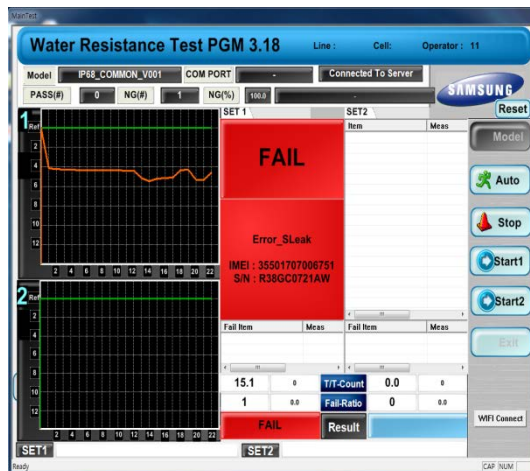
※ Caution  
1) Be care of scratch.

※ Caution  
1) Be care of scratch.

## 7. Level 2 Repair

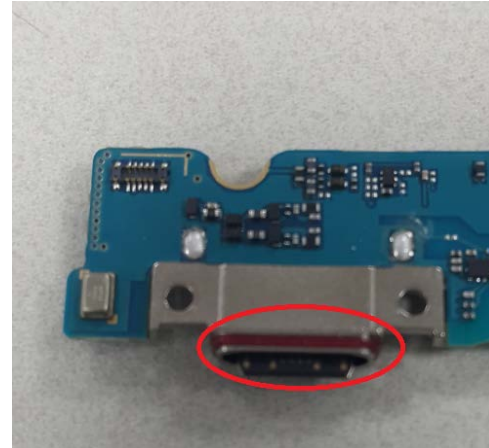
13

If fail WRT doing debugging(sealing or etc)



14

If IF connector problem, disassemble & remove gasket



※ Caution

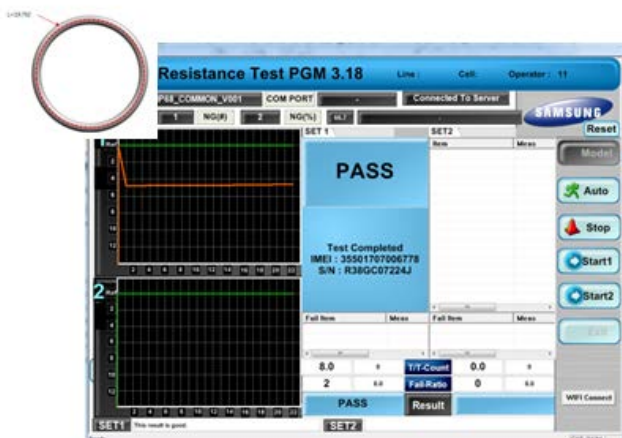
1) Be care of scratch.

※ Caution

1) Be care of PBA damage

15

Use O-ring(GH81-14271A) on IF CON  
Reassemble & Re WRT

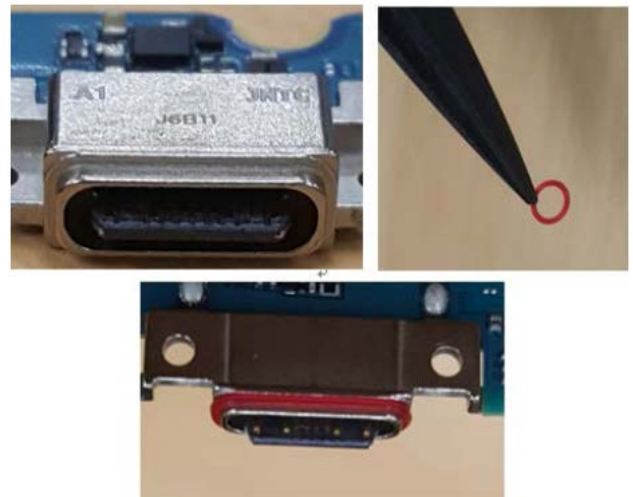


※ Caution

1) Be care of scratch.

16

Remove USB Dispensing on PBA.  
Insert O-Ring on PBA



※ Caution

1) Be care not to damage the PBA